

Tecrider/Bühnenanweisung

DENNIS JALE + SWEET INSPIRATION + TCB-BAND + JAM-GANG

Stand Nov 2008

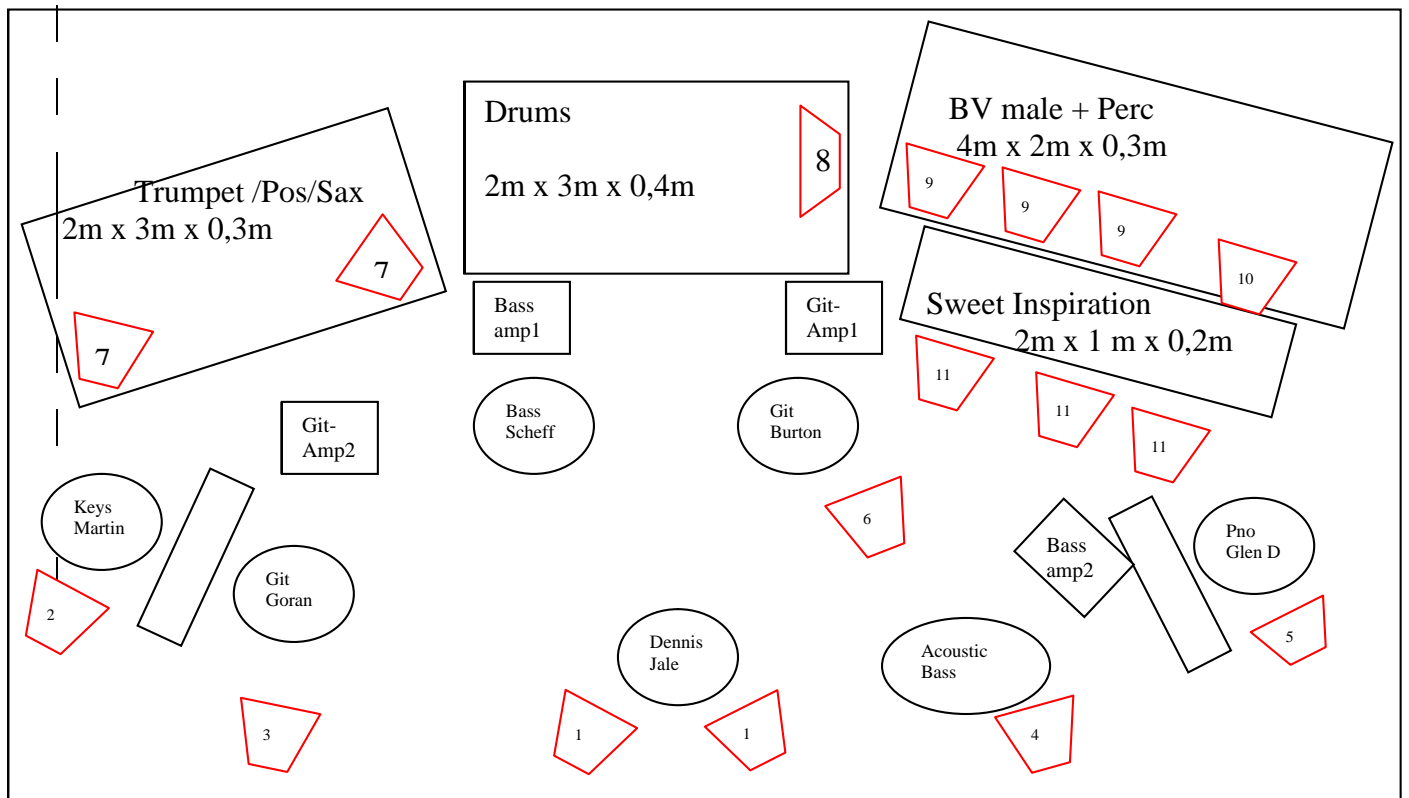
!!!!!!!!!! BACKLINE TBA !!!!!!!!!!!!!

Dennis Jale channel FOH

No.	Instr.	Mic/DI	Insert	info	
1	bd	audix d6	comp/gate	boomstand small	
2	sd	sm 57	comp/gate	boomstand small	
3	hh	Akg 451		boomstand small	
4	floortom	audix d4	gate	clip	
5	Tom Lo	audix d3	gate	clip	
6	Tom mid	audix d2	gate	clip	
7	Tom Hi	audix d2	gate	clip	
8	OH	neumann km 184		boomstand tall	
9	OH	neumann km 184		boomstand tall	
10	E - Base	DI	comp		
11	Upright base	DI	comp		
12	Git Goran	Sm 57		small	
13	Git Acc Goran	DI			
14	Git Burton	Sm 57		small	
15	KeyL L	DI			
16	KeyL R	DI			
17	Pno L	DI/or Mic neumann 184		boomstand tall	
18	Pno R	DI/or Mic neumann 184		boomstand tall	
19	Pno Monitor	Pickup/or sm 57			
20	Trumpet	RE20	group1/2	comp1-st	boomstand tall
21	Pos	RE20	group1/2	comp1-st	boomstand tall
22	SAX	audix d4	group1/2	comp1-st	boomstand tall
23	Konga mic	Clip (AKG or eq)			
24	Bongo mic	Clip (AKG or eq)			
25	Perc OH	neumann km 184			boomstand tall
26	BV percussion	Sm58	Group3/4	Comp2-st	boomstand tall
27	BV male	Sm58	Group3/4	Comp2-st	boomstand tall
28	BV male	Sm58	Group3/4	Comp2-st	boomstand tall
29	BV male	Sm 58	Group3/4	Comp2-st	boomstand tall
30	BV male	Sm 58	Group3/4	Comp2-st	boomstand tall
31	Sweet 1	Wireless sm58	Group5/6	Comp3-st	boomstand tall
32	Sweet 2	Wireless sm58	Group5/6	Comp3-st	boomstand tall
33	Sweet 3	Wireless sm58	Group5/6	Comp3-st	boomstand tall
34	Moderation/Spare	Shure Beta 87 UHF			straight-round base
35	Dennis Jale	Shure Beta 87 UHF	comp		straight-round base
...	CD + FX ret				

Stage:

Min. 12meter / 8meter / 0,6m high



All podestry needs black coating!

Monitoring:

Separate monitoring console located next to stage 40 working channels on min. 12 Auxes  
(soundcraft midas crest or equal)  
min. 6 gates 4 comp. and 1 reverb

17 wedges (15Zoll- 2Zoll) d&b,EAW,Nexo Ps15,Meyer or equal  
on 11 ways with 30Bands Graphic EQ (bss,klarktechnik)in each way

1 wedge for monitor engineer

## FOH

Min. 40 channel mixing console with 8 subgroups incl. VCA  
(soundcraft,midas,yamaha,....)

2 reverb engines (lexicon or T.C. )  
1 Tap-delay fx. (like TC d2)  
6 gates  
3 stereo compressors (bss,klark or equal)  
8 mono compressors (bss,klark or equal)  
1 stereo EQ for PA  
1 CD player on FOH  
microphones see channel list

we need min. 12 bar stools for our musicians on stage (they are fit – but not the youngest ;-)

## PA:

According to your venue

Modern 3 way driven audio System / or Line Array 100db/A on FOH without distortion

## Lights

- 3 Trusses rigged above Stage, if not possible a Groundsupport with a Midtruss is needed
- 1 Black Curtain attached on Back Truss
- 8 6 BAR PAR 64 CP 61 = 48 Lamps ( in Colours Lee 119 Blue, 106 Red and 179 Orange similar also accepted
- 6 Floorpar 64 CP 61 (Colour 126 pink)
- 2 ACL units
- 4 Molefay (4- or 8-lights)
- 12 Movinglights SPOT HMI 575 (at least), preferred 1200 HMI such as Martin Mac 2000 robe 1200 AT or similar
- 8 Movinglights Wash HMI 575, preferred Martin Mac 600, similar accepted
- 6 Fresnel 2K
- 15 Profile Lamps as Source four Zoom with 6-12 angle, or similar  
Dimmerchannels for the lights, (te 6 Bars may be connected 2 for 1 Channel each)
- 2 Hazers DMX controlled
- 1 Lightingdesk HogII preferred (other desks possible , just mail me)

Follow Spot + Operator (incl. Intercom to FOH)

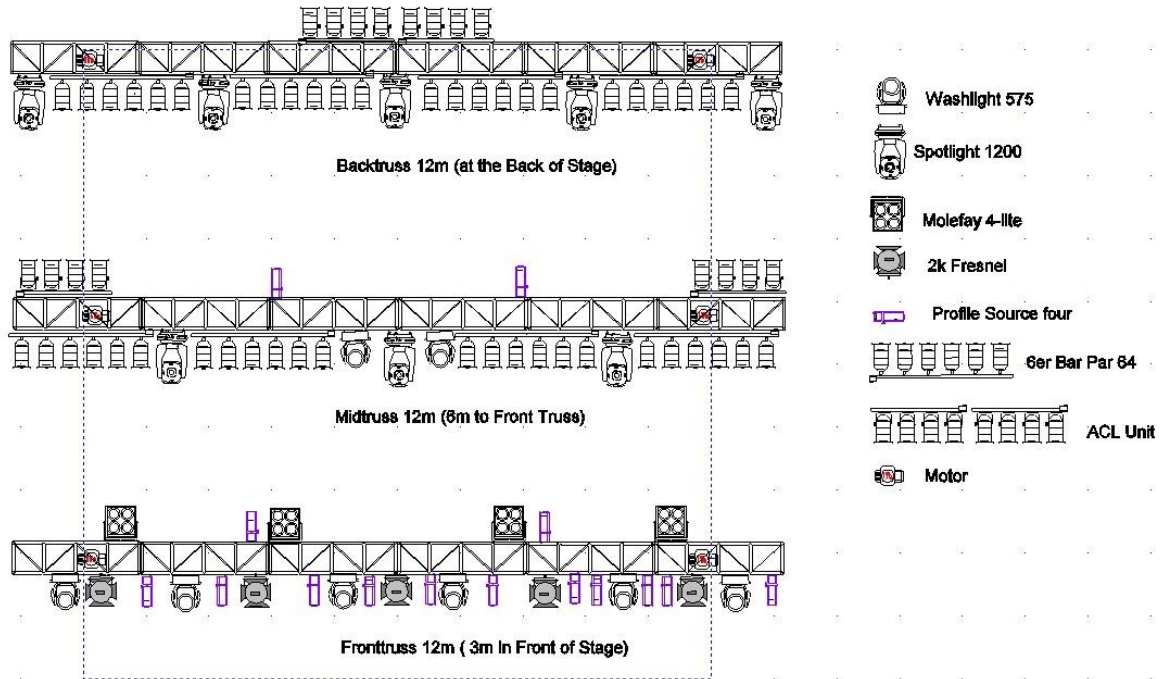
light engineer

[hans.duchan@aon.at](mailto:hans.duchan@aon.at)

audio engineer

markus wallner { [HYPERLINK "mailto:wallner@elekton.at"](mailto:markus.wallner@elekton.at) }

## Lightingplot Denis Jale & TCB Band Rigg



## Lightingplot Denis Jale & TCB Band Floor

